

Stromberg-Carlson

STROMBERG-CARLSON CENTRAL ENERGY TELEPHONES Bulletin 36-J

Catalog of central energy (common battery) telephones for 1936 with 1937 price list supplement.



Adobe Document Copyright 2010 by the JKL Museum of Telephony, Stockton, CA
Wayne Merit, Curator

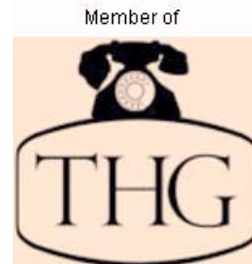
www.jklmuseum.com

Adobe Document Scanned and Created by Mike Neale
Optimized for viewing with Adobe Reader 7.0 or better and web loading.

www.strombergcarlsontelephone.com



www.telephonecollectors.org



Telecommunications
Heritage Group (UK)



Australasian Telephone
Collectors Society

6 Feb 2010

STROMBERG-CARLSON CENTRAL ENERGY TELEPHONES

Central Energy Telephones

Stromberg-Carlson Central Energy Telephones are unexcelled for talking efficiency and economical operation for either local or long distance service. They are made up in the following types.

Desk Telephones—the No. 1168 Desk Stand and No. 1156 Desk Set Box.

Wall Telephones—the No. 1155.

Ironclad Telephones—the No. 950.

Handset Telephones—the Nos. 1191, 1197, and 1201 Types.

Dial Telephones—the No. 1176 Desk Stand, Nos. 1192 and 1198 Handsets and No. 1157 Wall Telephone.

No. 1168 Desk Stand



A distinctively attractive instrument of rugged construction, light in weight and carefully balanced, finished with durable black enamel and nickel trim. Provided with black phenol compound ear cap, receiver shell and transmitter mouthpiece. Equipped with No. 7-C Transmitter, No. 27-A Permanent Magnet Receiver, No. MD-3-C 6 foot Cord and booster talking circuit.

This desk stand is provided with many unique maintenance economy features such as:—

A neat ball and socket transmitter arm joint—One slight turn to the knurled socket is all that is necessary to stiffen the action of this joint and to hold the mouthpiece adjusted at the right angle.

An easily inspected base—a slight turn to the left opens the base, exposing wiring connections and hookswitch contacts.

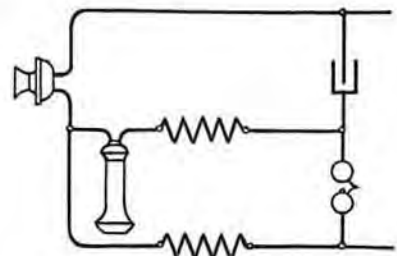
A quickly removed transmitter—bayonet slots permit removal of transmitter by simply loosening three screws.

Net Weight—3¾ lbs.

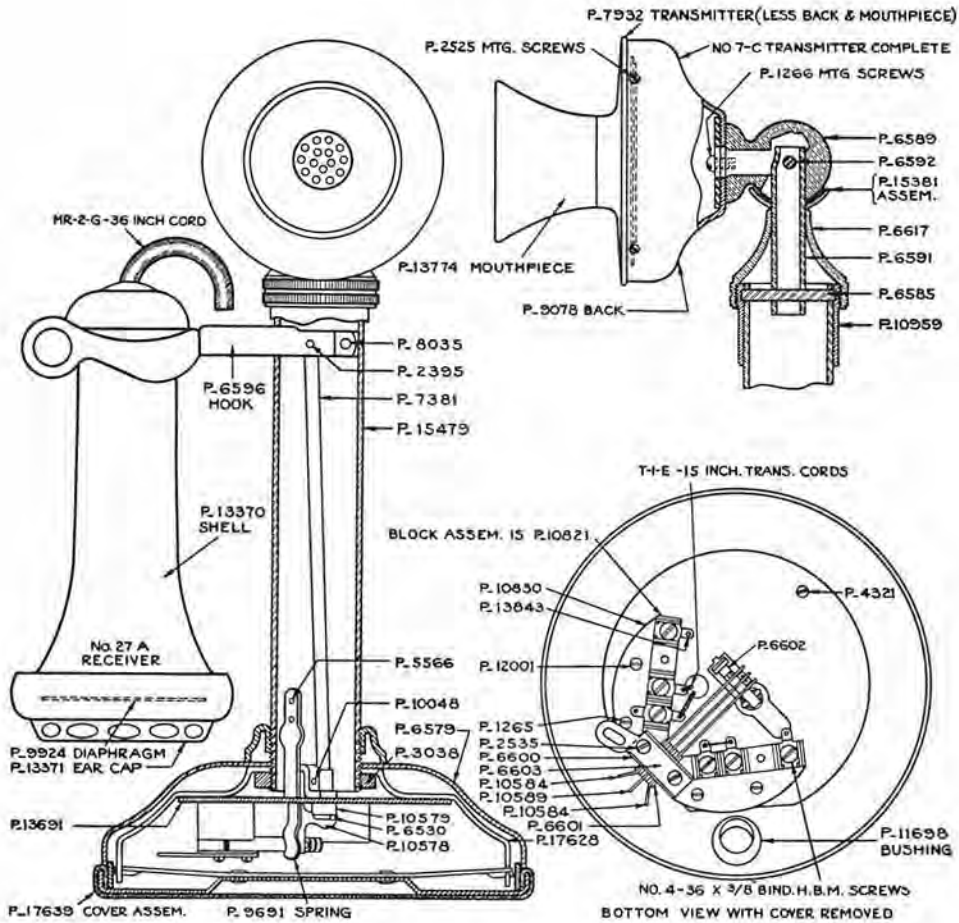
| Code No. | Description |
|----------|--|
| 1168 | Desk Telephone, less Desk Set Box (Induction coil, condenser, and ringer assembled in Desk Set Box.) |



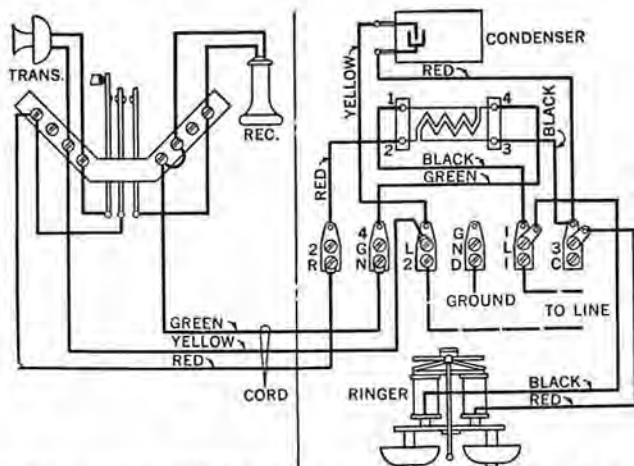
No. 1168 Desk Stand With No. 1156 Type Desk Set Box



Booster Talking Circuit



Line Diagram Showing Piece Numbers of Parts Used in No. 1168 Desk Stands



Wiring Diagram of No. 1168 Desk Stand as Used with No. 1156 Type Desk Set Box

No. 1176 Desk Stand

The Stromberg-Carlson No. 1176-M Desk Stand is similar to No. 1168 with the column off center to allow mounting of dial when desired. Is wired for booster circuit and used with No. 1156 Type Desk Set Box.

Net Weight—3½ lbs.

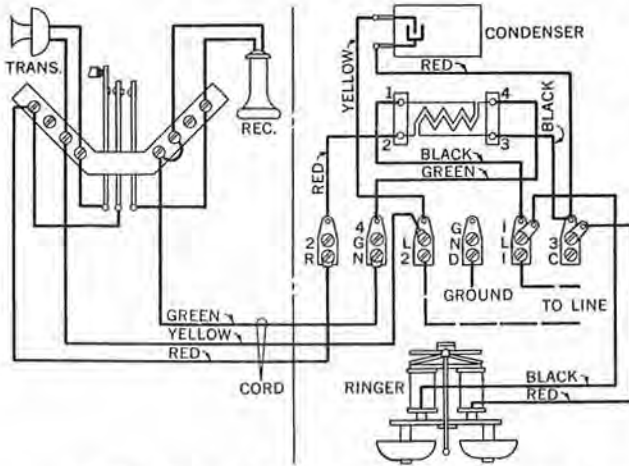
| Code No. | Description |
|----------|--|
| 1176-M | Desk Stand (dial opening covered with blank) |

Opening for dial is designed for Automatic, Western Electric, and North Electric Cos'. dials.

Prices of telephones equipped with dials will be quoted on request.

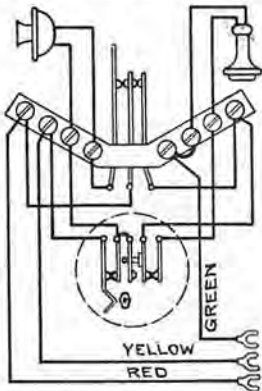


No. 1176-M Desk Stand

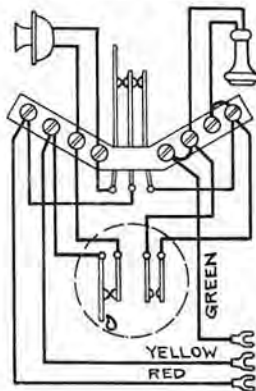


Wiring Diagram of No. 1176-M Desk Stand Connected to No. 1156-BYZ Desk Set Box Booster Circuit

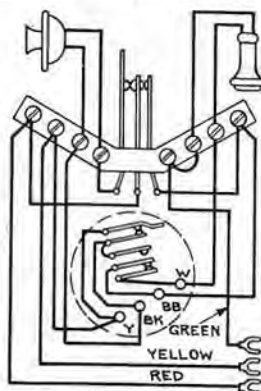
CONNECTIONS WITH AUTO-MATIC ELEC. INC. DIAL



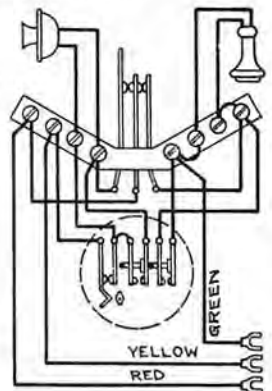
CONNECTIONS WITH NORTH ELEC. CO'S. DIAL NO. 1-B



CONNECTIONS WITH WESTERN ELEC. CO'S. DIAL NO. 2-A



CONNECTIONS WITH AUTOMATIC ELEC. INC. DIAL



Wiring Diagrams Showing No. 1176 Desk Stand Wired to Various Types of Dials

No. 1156 Type Desk Set Box

Case of pressed steel, black enamel finish. Gongs mounted inside leave a neat, sanitary exterior. Equipment consists of No. 46 Straight Line or No. 47 Type Harmonic Ringer, No. 21 Condenser and No. 44-B Induction Coil.

Net Weight, 5 lbs.

A convenient retaining screw, loosened a few turns, opens the box, exposing all the working parts for inspection or repairs.

Ringer—is accurately adjusted and equipped with clear-toned gongs.

Specially tuned ringers to be used with either High and Low frequency systems or with Synchronomic ringing systems can be furnished when specified at no additional cost. When ordering, specify the Code Number of Desk Set Box and frequency desired: for High and Low Frequency Systems, 20 and 60 cycles; for Synchronomic Frequency Systems, 30, 42 and 54 cycles.

Wired for Booster Circuit

| Code No. | Ringer | Condenser |
|----------|-------------------|-----------|
| 1156-BY | 1000 Ohms | 1 M. F. |
| 1156-BZY | 1000 Ohms Biased | 1 M. F. |
| 1156-EY | 16 Cycle Harmonic | 1 M. F. |
| 1156-FY | 33 Cycle Harmonic | 1 M. F. |
| 1156-GY | 50 Cycle Harmonic | 1 M. F. |
| 1156-HY | 66 Cycle Harmonic | 1 M. F. |
| 1156-NY | 25 Cycle Harmonic | 1 M. F. |

Wired for Anti Side Tone

| | | |
|----------|-------------------|---------------|
| 1156-AB | 1000 Ohms | 2 and 1 M. F. |
| 1156-AP | 2500 Ohms | 2 and 1 M. F. |
| 1156-ABZ | 1000 Ohms Biased | 2 and 1 M. F. |
| 1156-AEY | 16 Cycle Harmonic | 2 and 1 M. F. |
| 1156-AFY | 33 Cycle Harmonic | 2 and 1 M. F. |
| 1156-AGY | 50 Cycle Harmonic | 2 and 1 M. F. |
| 1156-AHY | 66 Cycle Harmonic | 2 and 1 M. F. |
| 1156-ANY | 25 Cycle Harmonic | 2 and 1 M. F. |

For dial systems specify No. 1156-BZY or No. 1156-ABZ which are equipped with biased ringers to prevent tapping of bells.

No. 1158 Type Desk Set Box

This is the same as the No. 1156 Type, except that it has no induction coil. It is designed for use with desk stands of handsets having the induction coil mounted in base of stands. May also be used as an extra extension bell.

Net weight—4½ lbs.



No. 1158 Type Desk Set Box

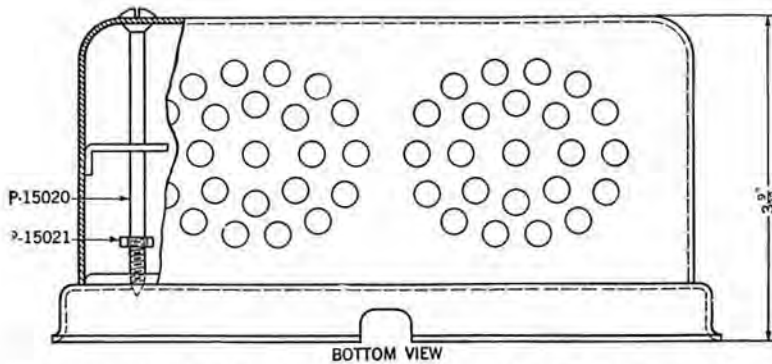
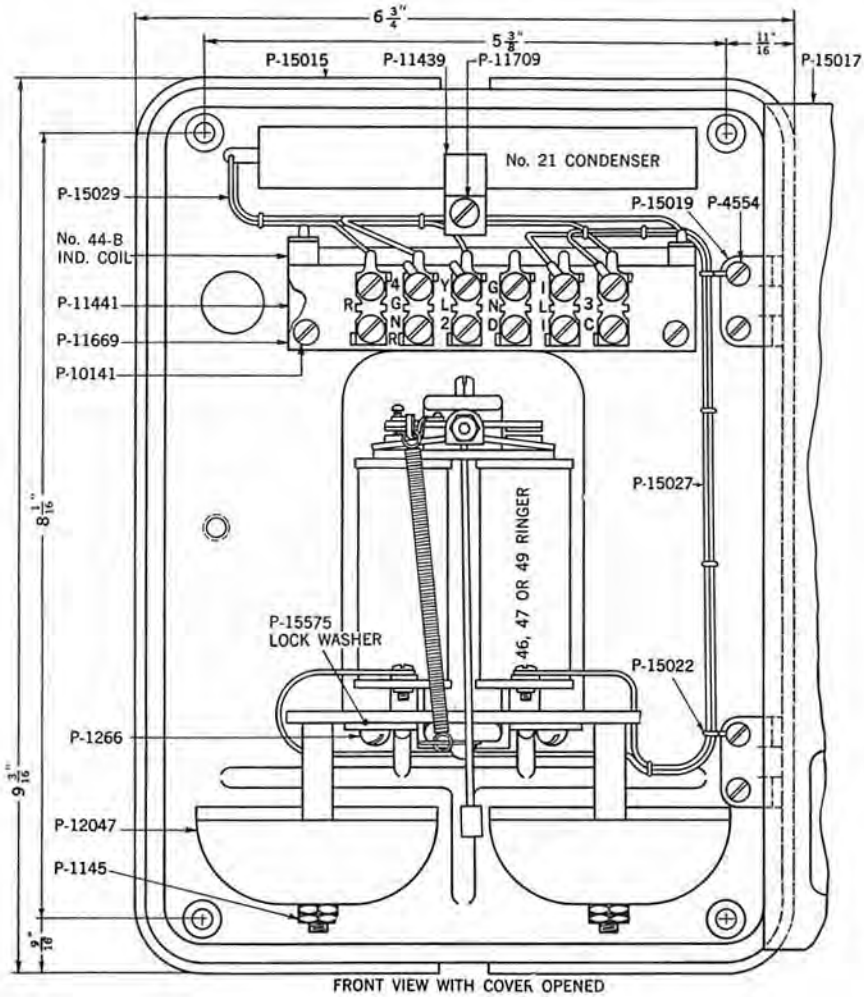
| Code No. | Ringer | Condenser |
|----------|-------------------|-----------|
| 1158-B | 1000 Ohms | 1 M. F. |
| 1158-BZ | 1000 Ohms Biased | 1 M. F. |
| 1158-E | 16 Cycle Harmonic | 1 M. F. |
| 1158-F | 33 Cycle Harmonic | 1 M. F. |
| 1158-G | 50 Cycle Harmonic | 1 M. F. |
| 1158-H | 66 Cycle Harmonic | 1 M. F. |

For information regarding specially tuned ringers, see No. 1156 Type.



Open View of No. 1156 Type Desk Set Box

No. 1156 Type Desk Set Box



Line Diagram Showing Piece Numbers of Parts Used in No. 1156 Type Desk Set Boxes

No. 1155 Type Wall Telephone

A very compact telephone which presents a neat appearance for use in residences and hotels. Gongs are enclosed, together with the other working parts, in a pressed steel box, finished in black enamel and nickel trim. Box is so designed that all the parts are easily accessible. Equipment consists of either No. 46 Straight Line or No. 47 Harmonic Type Ringer, No. 21 Condenser, No. 44-B Induction Coil, No. 27-A Receiver with No. MR-2-G 3 ft. Cord, No. 7-C Transmitter and No. P-13824 Hookswitch. The telephone is wired for "Booster Circuit."

Enclosed gongs—give a neat appearance, leave no inaccessible place for dust to accumulate and reduces the tendency of subscribers to damage the instrument by attempting to change tone of gongs.

A convenient retaining screw—loosened a few turns, opens the box, exposing all the working parts for inspection or repairs.

Bayonet slots—permit removal of transmitter by simply loosening three screws.

Transmitter—is of the solid back, carbon cup, long distance type, provided with bakelite mouthpiece.

A neat transmitter arm—gives a handy vertical adjustment to the transmitter.

Net Weight—7½ lbs.

| Code No. | Ringer | Condenser |
|----------|-------------------|-----------|
| 1155-BY | 1000 Ohms | 1 M. F. |
| 1155-BZY | 1000 Ohms | 1 M. F. |
| 1155-EY | 16 Cycle Harmonic | 1 M. F. |
| 1155-FY | 33 Cycle Harmonic | 1 M. F. |
| 1155-GY | 50 Cycle Harmonic | 1 M. F. |
| 1155-HY | 66 Cycle Harmonic | 1 M. F. |
| 1155-NY | 25 Cycle Harmonic | 1 M. F. |

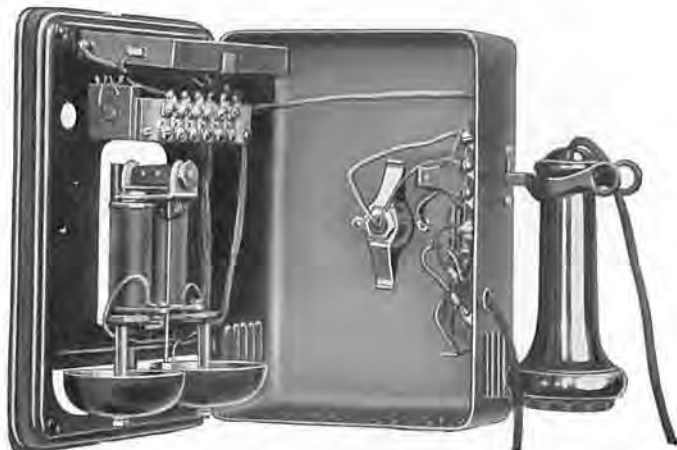
Specially tuned ringers can be furnished as specified under No. 1156 Type Desk Set Box.

D-2930 Package Assembly—For the conversion of the No. 1155 Wall Telephone or the No. 1157 Wall Telephone shown on page eight of this bulletin into a Handset Type Wall Telephone similar to the No. 2819 Wall Telephone shown on page eight of this bulletin the D-2930 Package Assembly has been made up, consisting of the following parts necessary to make the change: 1 No. 16 Handset and Cord, 1 Det. 1 Sk-3277 Hook, 1 D-2929 Blank, 2 P-12910 Screws (Black Enamel Heads), 2 P-588 Nuts, 1 P-25966 Instruction Sheet.

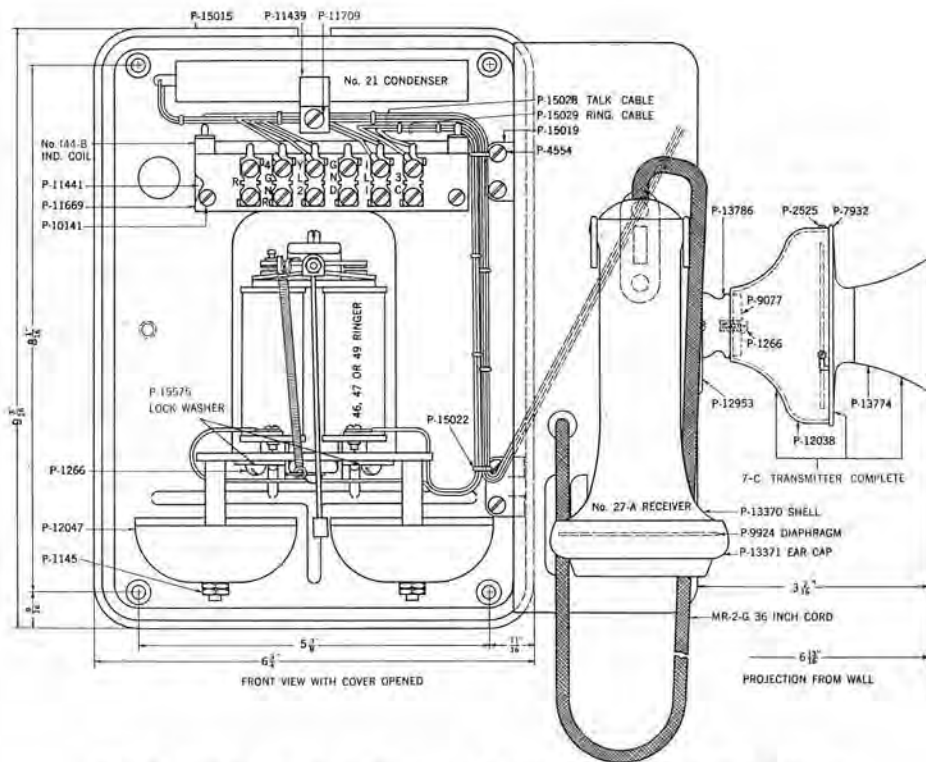


No. 1155 Type Wall Telephone

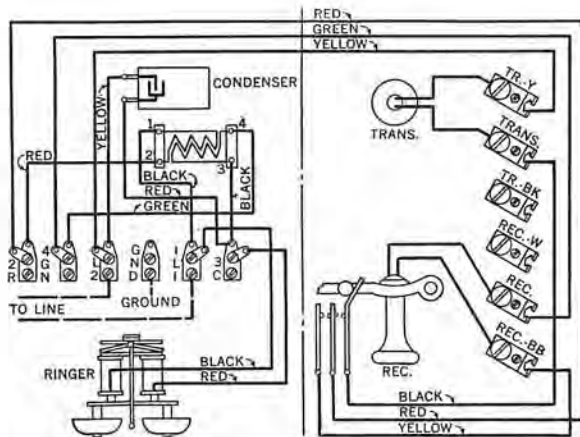
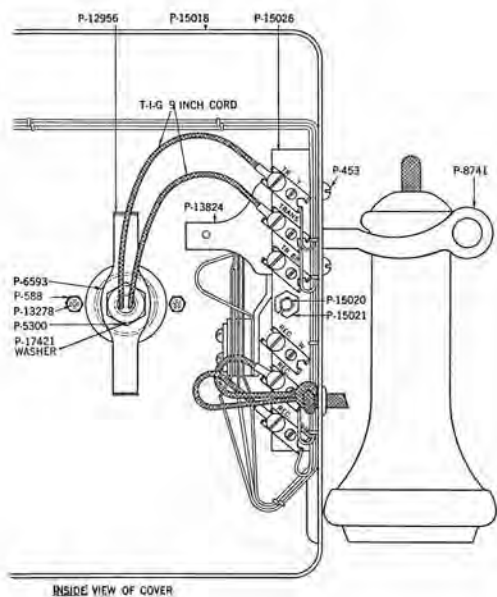
Your present No. 1155 Wall Telephone may be converted to the new D-2819 Wall Telephone shown on page eight by means of the D-2930 Package Assembly described on this page.



Open View No. 1155 Type Wall Telephone



Line Diagram Showing Piece Numbers of Parts Used in No. 1155 Type Telephones



Wiring Diagram of No. 1155 Type Wall Telephone

No. 1157 Wall Telephone



No. 1157 Wall Telephone

The Stromberg-Carlson No. 1157 Wall Telephone is same as No. 1155 except that it has an opening for mounting a dial when desired.

Net Weight—7½ lbs.

| Code No. | Ringer | Condenser |
|----------|-------------------|-----------|
| 1157-BZY | Biased | 1 M. F. |
| 1157-EY | 16 Cycle Harmonic | 1 M. F. |
| 1157-FY | 33 Cycle Harmonic | 1 M. F. |
| 1157-GY | 50 Cycle Harmonic | 1 M. F. |
| 1157-HY | 66 Cycle Harmonic | 1 M. F. |
| 1157-NY | 25 Cycle Harmonic | 1 M. F. |

For information regarding dials see No. 1176 Desk Stand.

D-2819 Wall Telephone with No. 15 Handset Anti-Side Tone

The Stromberg-Carlson No. D-2819 Handset Type Wall Telephone for use with Central Energy Systems was designed to accommodate an increasing number of requests for the standard wall telephone equipped with the new No. 15 Handset in place of the separate transmitter and receiver units. This telephone having all the superior features of the No. 1155 Telephone plus the marvelous transmitting qualities for which these new handsets are noted, has the added advantage of mounting on wall or end of desk convenient to the user. This places at the disposal of careful purchasers a Central Energy Telephone that cannot be surpassed for either local or long distance service and convenience. May be obtained as follows:



D-2819 Telephone

| Code No. | Ringer | Weight |
|-----------|------------------------|---------|
| D-2819-B | 1000 Ohm Straight Line | 6½ lbs. |
| D-2819-BZ | 1000 Ohm Biased | 6½ lbs. |
| D-2819-E | 16 Cycle Harmonic | 6½ lbs. |
| D-2819-F | 33 Cycle Harmonic | 6½ lbs. |
| D-2819-G | 50 Cycle Harmonic | 6½ lbs. |
| D-2819-H | 66 Cycle Harmonic | 6½ lbs. |
| D-2819-N | 25 Cycle Harmonic | 6½ lbs. |

NOTE: To convert your present No. 1155 Wall Telephone into a D-2819 Type Wall Telephone order the No. 2930 Package Assembly described on page six.

D-2820 Wall Telephone with No. 15 Handset for Dial Service Anti-Side Tone

The Stromberg-Carlson No. D-2820 Handset Type Central Energy Wall Telephone is similar to our No. 1157 Wall Telephone except that it is equipped with the marvelous No. 15 Handset in place of the separate transmitter and receiver units. May be obtained as follows:

| Code No. | Ringer | Net Weight | |
|-----------|-------------------|------------|-----------|
| | | Less Dial | With Dial |
| D-2820-BZ | 1000 Ohms Biased | 6½ lbs. | 6¾ lbs. |
| D-2820-E | 16 Cycle Harmonic | 6½ lbs. | 6¾ lbs. |
| D-2820-F | 33 Cycle Harmonic | 6½ lbs. | 6¾ lbs. |
| D-2820-G | 50 Cycle Harmonic | 6½ lbs. | 6¾ lbs. |
| D-2820-H | 66 Cycle Harmonic | 6½ lbs. | 6¾ lbs. |
| D-2820-N | 25 Cycle Harmonic | 6½ lbs. | 6¾ lbs. |

Note: Prices of above telephones equipped with dials will be quoted on request.

No. 950 BY Ironclad "Central Energy" Weatherproof Telephone

An ironclad, moisture-proof, gas-proof, concussion-proof, fire-proof and water-proof "Central Energy" telephone which is built especially for systems in either underground or exposed surface localities which require extra strong, well-insulated and dependable service.

Case—is of heavy cast-iron, provided with outer door, inner door and gong hood. All parts are heavily coated with rust-resisting paint.

Outer-Door—is equipped with a gas-tight rubber gasket and compression lever catch, arranged for either key or plunger type lock. Opening outer door permits use of the instrument for either signaling or talking.

Inner-Door—is hinged for opening during repairs, but is otherwise held securely closed by machine screws and a felt gasket. Inner door mounts the transmitter and receiver.



Open View No. 950 BY Ironclad Telephone

Transmitter—is of the solid back long distance carbon cup type, provided with black phenol compound mouthpiece.

Receiver—is of the bi-polar, magnetic long distance type, provided with black phenol compound ear cap and shell. An automatic cord take-up device prevents the receiver cord being caught when the outer door is closed after conversation.

Ringer—is equipped with loud, clear-toned gongs which are concealed under the gong hood. The ringer, clapper rod and armature are ingeniously operated by magnetic induction through a gas-tight brass plate. This design permits mounting the ringer coils in a protected position behind the inner door, entirely free from fumes, moisture, etc.



No. 950 BY Ironclad Telephone



Showing Inner Compartment No. 950 BY Ironclad Telephone

Hookswitch—is of pressure, plunger construction, positive in operation and not dependent upon gravity.

Terminal Box—is mounted on the underside of the telephone. Contains two line terminals and a ground terminal. These terminals pass through water-tight bushings to the interior of the telephone so that it is unnecessary to open the instrument when making connections. Entrance hole is threaded for $\frac{1}{2}$ " conduit.

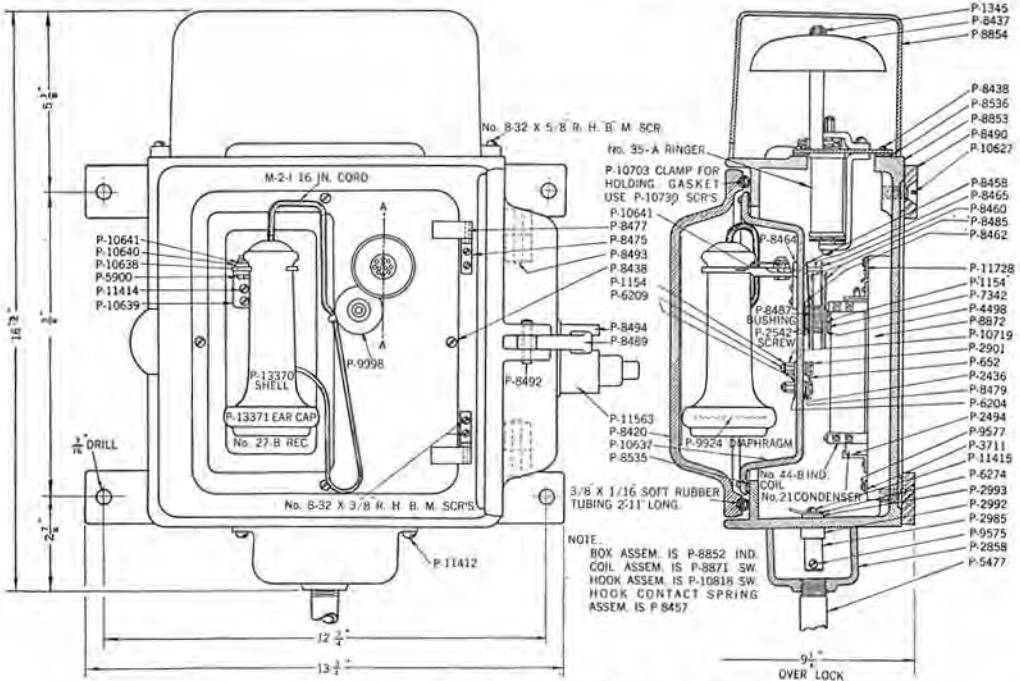
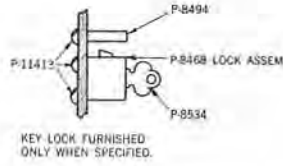
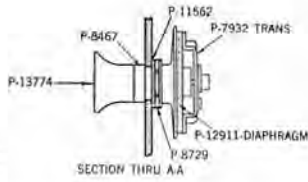
Wiring—is the regular "Booster Circuit."

Net Weight—62 lbs.

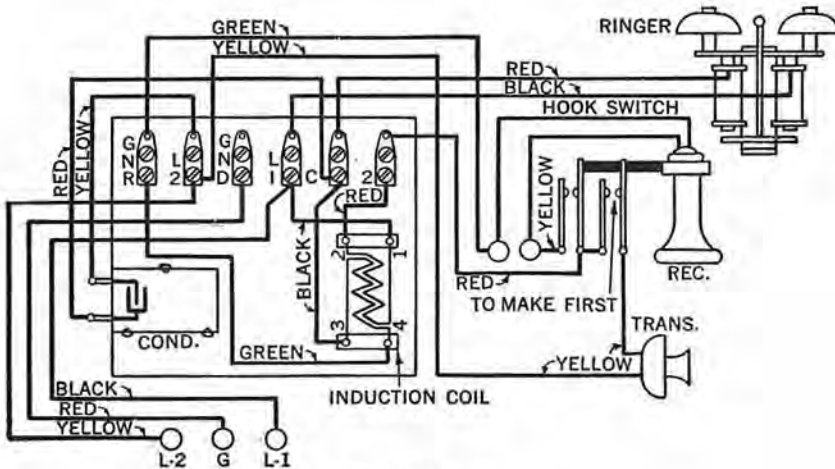
| Code No. | Ringer | Condenser |
|----------|-----------|-----------|
| 950-BY | 1000 Ohms | 1 M. F. |

Additional Features

Additional for Key Snap Lock (Pc. 8468)
Additional for Extra Keys (Pc. 8534)



Line Drawing Showing Piece Numbers of Parts used in No. 950 by Iron-clad, Central Energy, Weatherproof Telephone.



Wiring Diagram

Handset Telephones

No. 1191 Handset Telephone

Anti-Side Tone

The Stromberg-Carlson No. 1191 Handset Telephone is a complete self-contained instrument. The separate desk set box is no longer required. The ringer, induction coil and condenser are mounted in the base of the handset stand.

This telephone is the last word in economy, efficiency and beauty—the result of several years of laboratory research and development.



No. 1191 Handset Telephone

The Handset, stand and cradle of this new telephone are made of black moulded phenol compound presenting a rich black polished finish that is permanent.

The Induction Coil is of entirely new design, resembling the highly efficient radio audio transformer; it is of the three-winding type required in the anti-side tone circuit and is designed to give the best transmitting and receiving efficiency.

The Condenser is of special design and consists of two 1 MF Units, arranged to permit its use as a 2 MF in the talking circuit and a 1 MF in the ringing circuit. These condensers are designed to withstand a breakdown test of 750 Volts D. C.

The Ringer is entirely new and compact so that it will mount in the space available. It has many features to recommend it to telephone users.

The Hookswitch is of novel design and is secured to the base by two screws. The switch springs are of spring nickel silver, long and flexible, providing smooth plunger action. Definite spring stops insure positive and permanent contact adjustment.

The Receiver is assembled complete with ear cap and tested before mounting it in the hand set handle and threading it into the metal insert connects it into the circuit. This is a splendid feature from the standpoint of maintenance.

The Transmitter is designed to meet the severe operating conditions encountered in handset service. It is highly efficient, quiet, gives better articulation than the usual desk stand type.

| Code No. | Ringer |
|----------|-------------------------|
| 1191-B | 1500 Ohms Straight Line |
| 1191-BZ | 1500 Ohms Straight Line |
| 1191-E | 16 Cycle Harmonic |
| 1191-F | 33 Cycle Harmonic |
| 1191-G | 50 Cycle Harmonic |
| 1191-H | 66 Cycle Harmonic |
| 1191-N | 25 Cycle Harmonic |

Net Weight—3½ lbs.

No. 1192 Handset Telephones

Anti-Side Tone

The Stromberg-Carlson No. 1192 Handset Telephone is complete in itself. The ringer, induction coil and condenser being mounted in its base eliminates the necessity of a separate desk set box. It has all the fine features of the No. 1191 Telephone and in addition has space provided for mounting a dial when desired.



No. 1192 Handset Telephone

| Code No. | Ringer |
|----------|----------|
| 1192-BZ | Biased |
| 1192-E | 16 Cycle |
| 1192-F | 33 Cycle |
| 1192-G | 50 Cycle |
| 1192-H | 66 Cycle |
| 1192-N | 25 Cycle |

Net Weight—4 lbs.

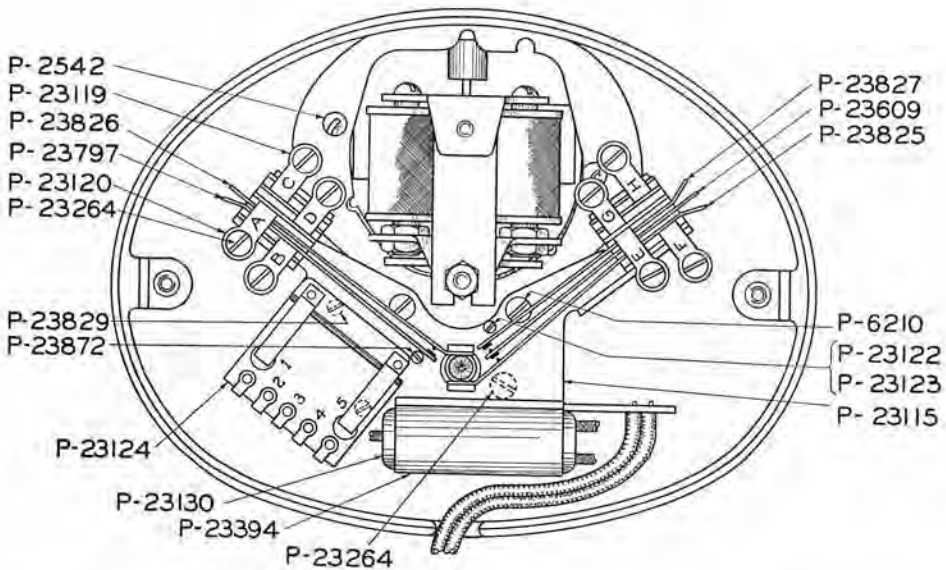
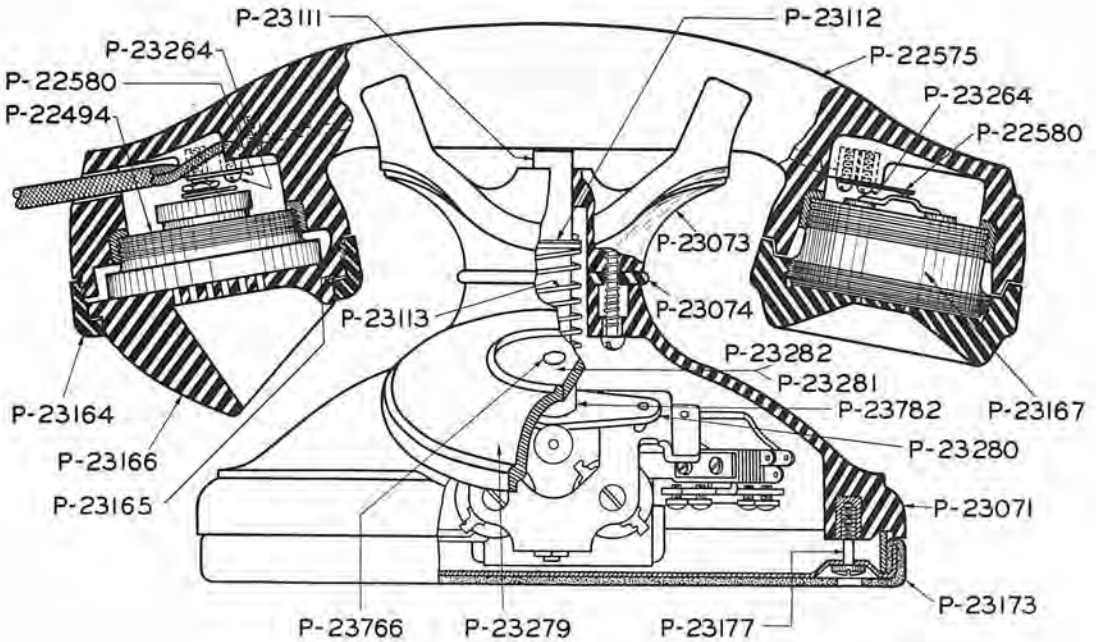
No. 1197 Handset Telephone



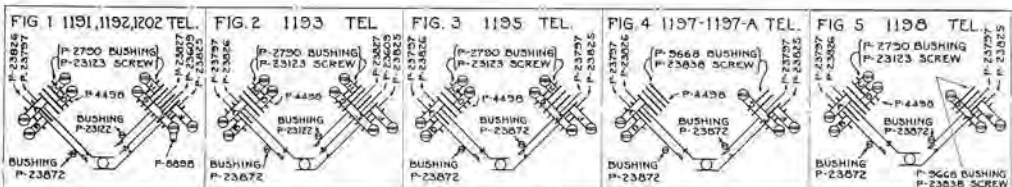
No. 1197 Handset

The Stromberg-Carlson No. 1197 Handset Telephone is designed for use with the No. 1156 Desk Set Box for manual service only. The ringer, induction coil and condenser are mounted in the desk set box. This telephone is wired for booster circuit and equipped with 3-conductor 6-ft. cord. May also be used with No. 1180 Local Battery Desk Set Box.

Net Weight—2½ lbs.



Line Diagram Showing Piece Numbers of Parts used in No. 1191 Type Hand Set Telephones



No. 1197-A Handset Telephone

Anti-Side Tone

The Stromberg-Carlson No. 1197-A Handset Telephone is the same as No. 1197 except that it is wired for anti-side tone and is equipped with a 4-conductor, 6-ft. cord. This telephone is for use with No. 1156-BA Desk Set Box.

Net Weight—2½ lbs.

No. 1198 Type Handset Telephone



No. 1198 Handset

No. 1198-M Handset Telephone

The Stromberg-Carlson No. 1198-M Handset Telephone is designed for either manual or dial service. Is wired with the booster circuit and equipped with 3-conductor 6-ft. cord. Used with No. 1156-BY Desk Set Box. When ordered for immediate use in dial service specify Pc. No. 24711 Package Assembly which contains dial connecting cords.

No. 1198-MA Handset Telephone

Anti-Side Tone

The Stromberg-Carlson No. 1198-MA Handset Telephone is the same as No. 1198-M except that it is wired with anti-side tone circuit and equipped with 4-conductor 6-ft. cord. Used with No. 1156-BA Desk Set Box.

Net Weight—2¾ lbs.

No. 1202 Handset Telephone

The Stromberg-Carlson No. 1202 Handset Telephone is the same as No. 1191 except that it is less the ringer which is mounted in the Desk Set Box. This hand set is designed for use in place of our No. 988 Local Secondary desk stand. Used with No. 1158-B Desk Set Box. Uses same base as No. 1197.

Net Weight—2¾ lbs.



No. 1201 Handset

No. 1201 Type Handset Telephone

The Stromberg-Carlson No. 1201-C Handset, Central Energy or Magneto Sub. Station Telephone, may be used with either No. 1156-BY Central Energy or No. 1180 Magneto Desk Set Boxes. Is wired with booster circuit. This telephone is ideal where desk space is limited as it may be mounted at side of desk or on the wall. Gives the same excellent service as No. 1191 type.

Net Weight—2½ lbs.

No. 1201-CA Handset Telephone

Anti-Side Tone

The Stromberg-Carlson No. 1201-CA Handset Telephone is the same as No. 1201-C except that it is wired with anti-side tone circuit. Used with No. 1156-BA Desk Set Box.

Net Weight—2½ lbs.

No. 11 Type Handset



No. 11 Type Handset Equipped with Test Clips

Stromberg-Carlson No. 11 Type Hand Set is used primarily as a testing set, but it may be conveniently used in apartment house service, and also in extension station equipment for office or residence.

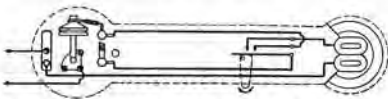
It is simple in design—easy to carry—fits nicely in the coat pocket. Dimensions— $8\frac{3}{4} \times 2\frac{3}{8} \times 2\frac{1}{8}$ inches. Finish, black enamel.

Equipped with long distance transmitter and bi-polar receiver, mounted upon a flat steel tubing handle. The finger switch placed within the handle

requires but slight pressure, either way, for positive operation. Detachable plates are provided at both ends of the handle so that the transmitter, receiver, and cord connections may be easily examined, and conveniently changed when necessary. All exposed parts, except the bakelite ear cap, and finger switch are made of metal so that the instrument will withstand hard usage.

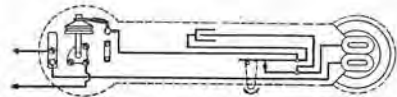
Net Weight—1 lb., 7 ozs.

11-C Used with Central Energy telephone systems not only as an extension telephone but also as a pocket test set for inspectors and for linemen. A non-locking finger switch closes the line circuit through the transmitter and the receiver connected in series. Furnished complete with No. MC-2-C, 6 ft. Moisture-proofed Cord. Cord ends are provided with test clips (No. 34 Cord Tips).



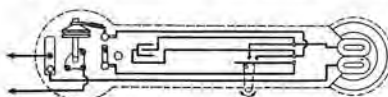
Wiring Diagram of No. 11-C

11-E Used with Central Energy and machine switching systems for testing and for service observation. The transmitter and the receiver are wired in series with a non-locking finger switch which has a pair of contacts that are normally closed so as to shunt out a $4/10$ M. F. condenser which is located in the handle. Furnished complete with No. C-2-C, 6 ft. Moisture-proofed Cord. The free cord ends are provided with test clips (No. 34 Cord Tips).



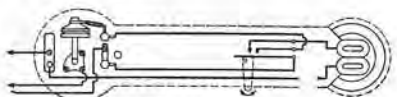
Wiring Diagram of No. 11-E

11-D Used with Central Energy and machine switching systems for testing and for service observation. Transmitter and receiver are wired in series with a $4/10$ M. F. condenser which is enclosed within the handle. A non-locking finger switch when operated to call central shunts out the condenser. Furnished complete with No. MC-2-C, 6 ft. Moisture-proofed Cord. The free cord ends are provided with test clips (No. 34 Cord Tips).



Wiring Diagram of No. 11-D

11-L Used with magneto equipment such as: the No. 843 Test Set and the portable field telephones. A non-locking finger switch is wired so that when operated it will close the contacts which control the flow of battery current through the transmitter. Furnished complete with No. C-3-B, 6 ft. Moisture-proofed Cord.



Wiring Diagram of No. 11-L

Stromberg-Carlson Telephone Manufacturing Company

General Office and Factory

100 CARLSON ROAD
Telephone Culver 260
ROCHESTER, NEW YORK

Branch

2017 GRAND AVENUE
Telephone: Harrison 6618
KANSAS CITY, MISSOURI

Branch

390 FOURTH STREET
Telephone: Douglas 4220
SAN FRANCISCO, CALIFORNIA

Branch

564-70 WEST ADAMS ST.
Telephone: State 4236
CHICAGO, ILLINOIS

PRICE SHEET

of STROMBERG-CARLSON CENTRAL ENERGY TELEPHONES for use with Bulletin No. 36-J as of April 15, 1937

F. O. B. SHIPPING POINT

| | | Rochester and Chicago | Kansas City | San Francisco |
|---------------------------------------|---|--------------------------|----------------|------------------|
| DESK STANDS and DESK SET BOXES | | | | |
| 1182†† | Desk Stand—Listed on page 1 | \$ 9.30 | \$ 9.45 | \$ 9.70 |
| 1208§ | Desk Stand—Listed on page 3 | 9.30* | 9.45* | 9.70* |
| 1156-BY | Desk Set Box—Listed on page 4 | 7.45 | 7.60 | 7.75 |
| 1156-BYZ | Desk Set Box—Listed on page 4 | 7.45 | 7.60 | 7.75 |
| 1156-EY | Desk Set Box—Listed on page 4 | 8.00 | 8.15 | 8.30 |
| 1156-FY | Desk Set Box—Listed on page 4 | 8.00 | 8.15 | 8.30 |
| 1156-GY | Desk Set Box—Listed on page 4 | 8.00 | 8.15 | 8.30 |
| 1156-HY | Desk Set Box—Listed on page 4 | 8.00 | 8.15 | 8.30 |
| 1156-NY | Desk Set Box—Listed on page 4 | 8.00 | 8.15 | 8.30 |
| 1156-AB | Desk Set Box—Listed on page 4 | 7.45 | 7.60 | 7.75 |
| 1156-AP | Desk Set Box—Listed on page 4 | 7.70 | 7.85 | 8.00 |
| 1156-ABZ | Desk Set Box—Listed on page 4 | 7.45 | 7.60 | 7.75 |
| 1156-AEY | Desk Set Box—Listed on page 4 | 8.00 | 8.15 | 8.30 |
| 1156-APY | Desk Set Box—Listed on page 4 | 8.00 | 8.15 | 8.30 |
| 1156-AGY | Desk Set Box—Listed on page 4 | 8.00 | 8.15 | 8.30 |
| 1156-AHY | Desk Set Box—Listed on page 4 | 8.00 | 8.15 | 8.30 |
| 1156-ANY | Desk Set Box—Listed on page 4 | 8.00 | 8.15 | 8.30 |
| 1158-B | Desk Set Box—Listed on page 4 | 6.75 | 6.90 | 7.05 |
| 1158-BZ | Desk Set Box—Listed on page 4 | 6.75 | 6.90 | 7.05 |
| 1158-E | Desk Set Box—Listed on page 4 | 7.30 | 7.45 | 7.60 |
| 1158-F | Desk Set Box—Listed on page 4 | 7.30 | 7.45 | 7.60 |
| 1158-G | Desk Set Box—Listed on page 4 | 7.30 | 7.45 | 7.60 |
| 1158-H | Desk Set Box—Listed on page 4 | 7.30 | 7.45 | 7.60 |

WALL TELEPHONES

| | | | | |
|-----------|---|---------|---------|---------|
| 1155-BY | Wall Telephone—Listed on page 6 | \$14.15 | \$14.40 | \$14.75 |
| 1155-BYZ | Wall Telephone—Listed on page 6 | 14.15 | 14.40 | 14.75 |
| 1155-EY | Wall Telephone—Listed on page 6 | 14.80 | 15.05 | 15.40 |
| 1155-FY | Wall Telephone—Listed on page 6 | 14.80 | 15.05 | 15.40 |
| 1155-GY | Wall Telephone—Listed on page 6 | 14.80 | 15.05 | 15.40 |
| 1155-HY | Wall Telephone—Listed on page 6 | 14.80 | 15.05 | 15.40 |
| 1155-NY | Wall Telephone—Listed on page 6 | 14.80 | 15.05 | 15.40 |
| 1157-BYZ | Wall Telephone—Listed on page 8 | 14.15* | 14.40* | 14.75* |
| 1157-EY | Wall Telephone—Listed on page 8 | 14.80* | 15.05* | 15.40* |
| 1157-FY | Wall Telephone—Listed on page 8 | 14.80* | 15.05* | 15.40* |
| 1157-GY | Wall Telephone—Listed on page 8 | 14.80* | 15.05* | 15.40* |
| 1157-HY | Wall Telephone—Listed on page 8 | 14.80* | 15.05* | 15.40* |
| 1157-NY | Wall Telephone—Listed on page 8 | 14.80* | 15.05* | 15.40* |
| D-2819-B | Wall Telephone—Listed on page 8 | 18.70 | 18.95 | 19.30 |
| D-2819-BZ | Wall Telephone—Listed on page 8 | 18.70 | 18.95 | 19.30 |
| D-2819-E | Wall Telephone—Listed on page 8 | 19.25 | 19.50 | 19.85 |
| D-2819-F | Wall Telephone—Listed on page 8 | 19.25 | 19.50 | 19.85 |
| D-2819-G | Wall Telephone—Listed on page 8 | 19.25 | 19.50 | 19.85 |
| D-2819-H | Wall Telephone—Listed on page 8 | 19.25 | 19.50 | 19.85 |
| D-2819-N | Wall Telephone—Listed on page 8 | 19.25 | 19.50 | 19.85 |

F. O. B. SHIPPING POINT

| | | Rochester and Chicago | Kansas City | San Francisco |
|----------------------------------|---|--------------------------|----------------|------------------|
| WALL TELEPHONES—Continued | | | | |
| D-2820-BZ | Wall Telephone—Listed on page 8 | \$18.70* | \$18.95* | \$19.30* |
| D-2820-E | Wall Telephone—Listed on page 8 | 19.25* | 19.50* | 19.85* |
| D-2820-F | Wall Telephone—Listed on page 8 | 19.25* | 19.50* | 19.85* |
| D-2820-G | Wall Telephone—Listed on page 8 | 19.25* | 19.50* | 19.85* |
| D-2820-H | Wall Telephone—Listed on page 8 | 19.25* | 19.50* | 19.85* |
| D-2820-N | Wall Telephone—Listed on page 8 | 19.25* | 19.50* | 19.85* |
| 950-BY | Iron Clad Telephone—† | | | |
| | Listed on page 9 | 54.45 | 56.45 | 58.95 |

HANDSET TELEPHONES

| | | | | |
|---------|--|---------|---------|---------|
| 1191-B | Handset Telephones—Listed on page 11 | \$19.45 | \$19.75 | \$20.15 |
| 1191-BZ | Handset Telephones—Listed on page 11 | 19.45 | 19.75 | 20.15 |
| 1191-E | Handset Telephones—Listed on page 11 | 20.00 | 20.30 | 20.70 |
| 1191-F | Handset Telephones—Listed on page 11 | 20.00 | 20.30 | 20.70 |
| 1191-G | Handset Telephones—Listed on page 11 | 20.00 | 20.30 | 20.70 |
| 1191-H | Handset Telephones—Listed on page 11 | 20.00 | 20.30 | 20.70 |
| 1191-N | Handset Telephones—Listed on page 11 | 20.00 | 20.30 | 20.70 |
| 1192-BZ | Handset Telephones—Listed on page 11 | 19.45* | 19.60* | 19.85* |
| 1192-E | Handset Telephones—Listed on page 11 | 20.00* | 20.15* | 20.40* |
| 1192-F | Handset Telephones—Listed on page 11 | 20.00* | 20.15* | 20.40* |
| 1192-G | Handset Telephones—Listed on page 11 | 20.00* | 20.15* | 20.40* |
| 1192-H | Handset Telephones—Listed on page 11 | 20.00* | 20.15* | 20.40* |
| 1192-N | Handset Telephones—Listed on page 11 | 20.00* | 20.15* | 20.40* |
| 1197 | Handset Telephone—Listed on page 11 | 14.00 | 14.15 | 14.40 |
| 1197-A | Handset Telephone—Listed on page 13 | 14.10 | 14.25 | 14.50 |
| 1198 | Handset Telephone—Listed on page 13 | 14.00* | 14.15* | 14.40* |
| 1198-A | Handset Telephone—Listed on page 13 | 14.10* | 14.25* | 14.50* |
| 1202 | Handset Telephone—Listed on page 13 | 16.80 | 16.95 | 17.20 |
| 1201-C | Handset Telephone—Listed on page 13 | 13.25 | 13.40 | 13.65 |
| 1201-CA | Handset Telephone—Listed on page 13 | 13.25 | 13.40 | 13.65 |
| 19-C † | Handset—Listed on page 14 | 11.50** | | |
| 19-D † | Handset—Listed on page 14 | 12.50** | | |
| 19-L † | Handset—Listed on page 14 | 11.50** | | |
| D-2930 | Package Assembly—Listed on Page 6 | 8.25 | 8.40 | 8.65 |

*These prices do not include dial.
**Carried in Rochester stock only.

† Additional for Key Snap Lock (Pc. 8468) \$1.50 each
Additional for Extra Keys (Pc. 8534) \$.35 each.

†† Replaces No. 1168 Desk Stand
§ Replaces No. 1176-M Desk Stand
‡ Replaces No. 11 Type Hand Set

Stromberg-Carlson Telephone Manufacturing Company

General Office and Factory

100 CARLSON ROAD

Telephone Culver 260

ROCHESTER, NEW YORK

Branch

564-70 WEST ADAMS ST.

Telephone State 4236

CHICAGO, ILLINOIS

Branch

2017 GRAND AVENUE

Telephone Harrison 6618

KANSAS CITY, MISSOURI

Branch

180 NEW MONTGOMERY ST.

Telephone Garfield 6508

SAN FRANCISCO, CALIFORNIA